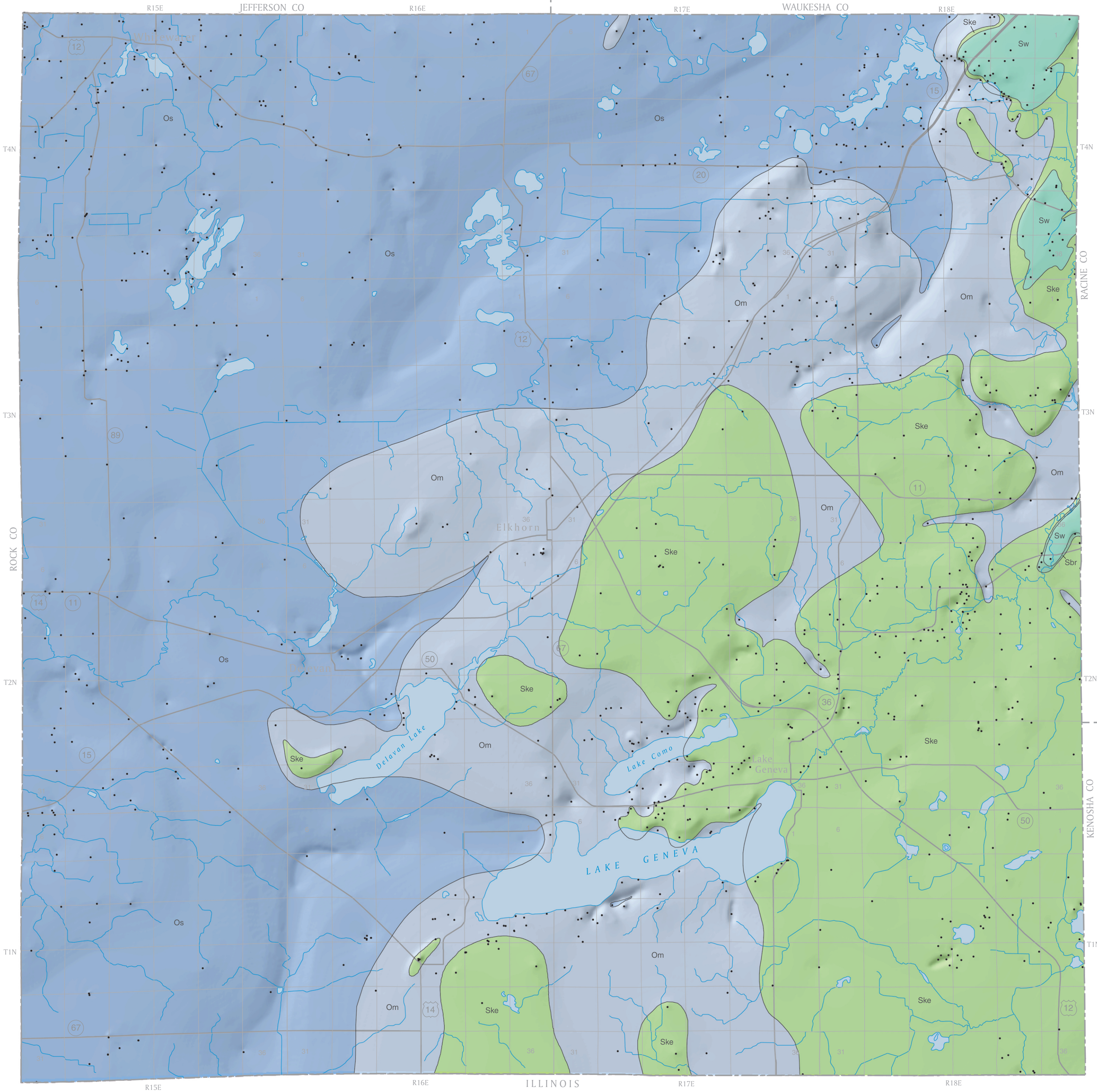


Preliminary bedrock geologic map of Walworth County, Wisconsin

K.M. Massie-Ferch

2004



EXPLANATION

Map units shown are covered by younger, unconsolidated sediment varying in thickness from a few feet to more than 500 feet.

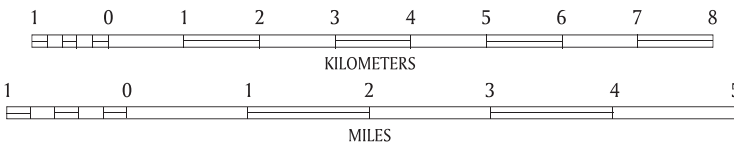
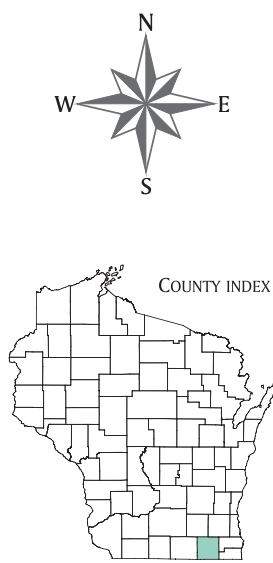
SILURIAN

- Sw** Waukesha Formation. Dolomite, medium grained, thin- to medium-bedded, light to medium gray, locally cherty.
- Sbr** Brandon Bridge Formation. Dolomite, very argillaceous, pale green to pink.
- Ske** Kankakee Equivalent. Dolomite, fine to medium grained, light to medium gray, locally cherty and fossiliferous.

ORDOVICIAN

- Om** Maquoketa Formation. Shale, greenish gray to purplish; dolomite, very argillaceous, tan.
- Os** Sinnipee Group. Dolomite, tan to buff in color, thin to medium-bedded, fossiliferous, locally cherty.

— Contact • Data point



Shaded relief of bedrock surface vertical exaggeration 5x

Wisconsin Transverse Mercator Projection
1991 adjustment to the North American Datum of 1983 (NAD 83/91)

This map represents work performed by the Wisconsin Geological and Natural History Survey and is released to the open files in the interest of making the information readily available. This map has not been edited or reviewed for conformity with Wisconsin Geological and Natural History Survey standards and nomenclature.

This map is part of an ongoing project funded by STATEMAP, the state component of the National Cooperative Geologic Mapping Program of the U.S. Geological Survey.



Wisconsin Geological and Natural History Survey
3817 Mineral Point Road, Madison, Wisconsin 53705-5100
phone 608/263-7389 fax 608/262-8086 www.uwex.edu/wgnhs/

James M. Robertson, *Director and State Geologist*

Data entry and processing by K.K. Zeiler. Cartography by D.L. Patterson.

Wisconsin Geological and Natural History Survey
Open-File Report 2004-11A